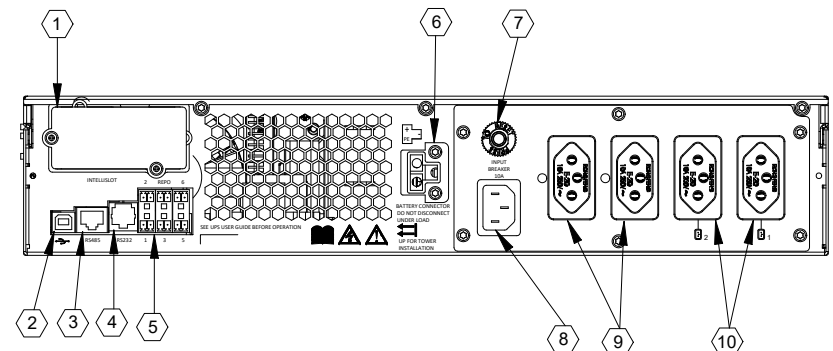
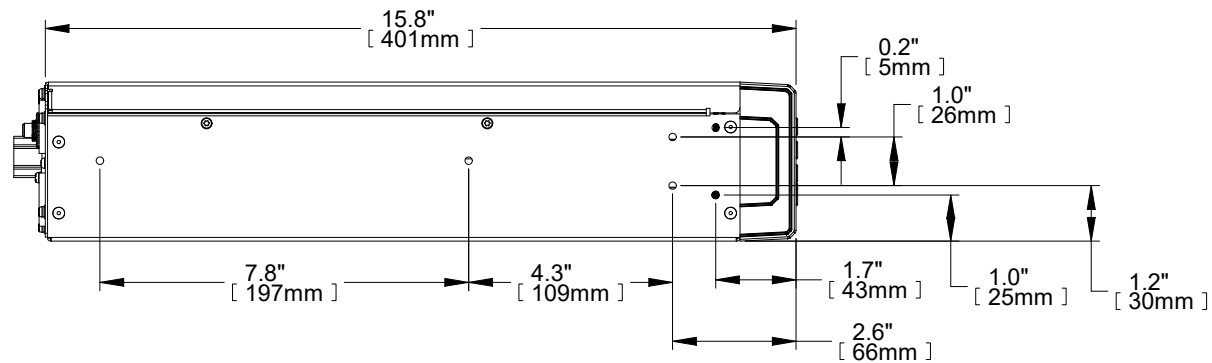


FRONT VIEW



REAR VIEW



SIDE VIEW

- | | |
|--------------------------------|---|
| ① INTELLISLOT PORT | ⑥ EXTERNAL BATTERY CONNECTOR |
| ② USB PORT | ⑦ 10A INPUT CIRCUIT BREAKER |
| ③ RS485 PORT | ⑧ INPUT POWER PLUG AND CABLE (C14) |
| ④ RS232 PORT | ⑨ NON-PROGRAMMABLE OUTPUT RECEPTACLES (IEC 60906-1 10A) |
| ⑤ TERMINAL BLOCK COMMUNICATION | ⑩ PROGRAMMABLE OUTPUT RECEPTACLES (IEC 60906-1 10A) |

NOTES:

- UNIT DIMENSIONS (WxDxH): 16.9" x 15.8" x 3.3" (2U)
(430mm) x (401mm) x (85mm)
- UNIT WEIGHT: 36.3lbs (16.5kg)
- SHIPPING DIMENSIONS (WxDxH): 22.4" x 24.3" x 10.3"
(570mm) x (617mm) x (262mm)
- SHIPPING WEIGHT: 51.7lbs (23.5kg)
- MINIMUM AIRFLOW CLEARANCE IS 4.0" (100mm)
FRONT AND REAR.

DRAWN BY B. LAY	SHEET NO. 1 OF 1	OUTLINE DRAWING LIEBERT GXT5 1000VA BRAZIL 230VAC RACK/TOWER UPS				
CHK BY L. JOHNSON	ECN NO.					
REF. DWG.	ORDER NO.					
DWG. NO. GXT5-1KIB_OD		DATE 5/12/20	REV. # 0	1050 DEARBORN DRIVE P.O. BOX 29186 COLUMBUS, OHIO 43229		

FILE NAME: I:\dpgeng\GXT5\Submittals(A)\Outline Dwg\GXT5-1KIB_OD